



**Abranimations Sensual Pole v1.0**

**Deluxe Edition**

**INSTRUCTION MANUAL**

## **INTRODUCTION**

This is our professional sensual dance pole. It contains 46 motion capture animations recorded in our real life motion capture studio <http://www.awesomedog.co.uk> with a professional pole dancer. The dances in this pole are sensual and sexy whilst still including many of the 'sport' tricks. For those who wish to perform faster dances we have included extra tempo options allowing you to perform the animations in Medium & Fast speeds as well as the standard Slow Speed.

Find out more about our RL Studio and Store in SL in this great video created by Draxtor Despres <https://www.youtube.com/watch?v=3nSJpzzN4Ug>

**LITE EDITION OWNERS: Please note if you have purchased the Lite version of this pole, it is the same in every way except with fewer animations built in.**

### **Features in this dance pole :-**

- 46 smooth motion capture pole dance animations uploaded at slow / medium and fast speeds.
- Mesh base with various colour options (NOTE the pole can also be unlinked from the base and used separately.)
- This pole copy-able so you do not need to buy extra copies and can keep backups!
- Auto Play Mode - Plays all 46 animations in sequence (creating a complete sequence of just under 22 minutes in Slow Tempo!)
- Manual Play Mode - You can use this mode to select specific dances.
- Pole Style Options - Chrome / Black / Neon Poles. The neon style comes with two colour changing options (flash and colour blend) and 9 static colour options.
- Spotlight - The cap on the pole has a spotlight built into it that you can toggle on/off
- Free Updates - There is an Update script built in to this pole for all future updates.
- Security options to restrict who can use the pole. Anyone, Group Only, Owner Only or Access List
- Tip Board with profile pick display and owner percentage cuts.

## **BEFORE YOU START**

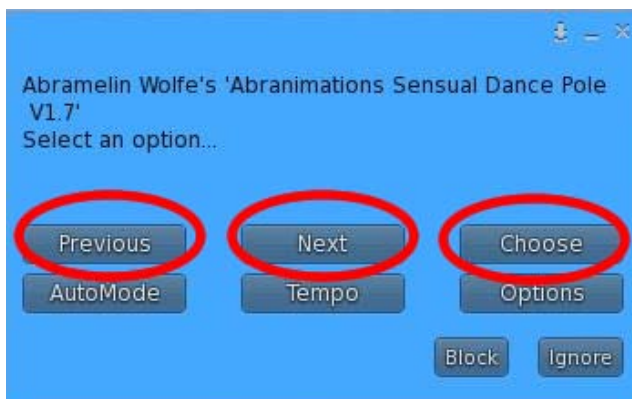
Please make backups of your pole in your inventory and keep them safe. Things sometimes go missing or break in SL. It's good to keep backups when possible!

## HOW TO USE THE POLE



To use the pole Rez it on the ground. Simply Sit on it to start dancing. The sitting avatar can access the menu to configure the poles colour options and dance options. The menu has the following options...

**Manual Mode** - This selects manual mode allowing you to choose dances. When in manual mode you will see the additional menu options Previous, Next and Choose. These options allow you to navigate through the built in dances. The Choose option displays a drop down menu with a list of the built in dances.



**Auto Mode** - When Auto Mode is selected you will not see the dance selection options. The dances will instead play through sequentially. There are a total of 46 animations that create a full 22 minute sequence in Slow mode. When in Auto Mode the Previous, Next and Choose menu options will not be visible.

**Tempo** - This menu option allows you to select the animation play speeds. The options are Slow, Medium and Fast. The official speed that the animations were captured at is Slow for a sensual slow pole dance. The Medium and Fast settings however are great for dancing to faster music.



**Options Menu** - This displays the options menu



**Help** - This option is for additional help

**Update** - This checks for updates.

**PLEASE NOTE**

**To prevent spam from multiple poles rezzed in-world the update feature in this pole is not automatic. You will need to manually check via the menu option to receive any updates that are released. If you would like to stay informed about all updates please join our in world group. [Abranimations Update Group](#) or Join our facebook page.**

**Pole Style** - This menu displays some options for the poles appearance.

**Show/Hide** - This option will hide the pole should you wish to use the animations around your own pole object. This can also be useful for dancers that wish to perform their own personal dances for a while on a podium.

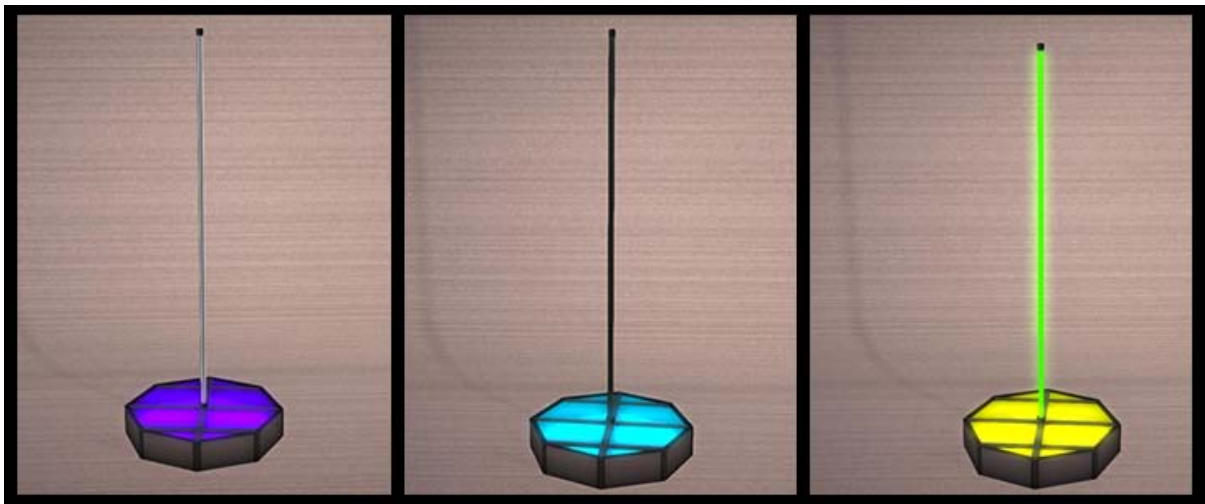
**Chrome** - This option turns the pole into a metal chrome pole

**Black** - This option turns the pole into a black chrome pole

**NeonBlend** - This option turns the pole into a neon glowing pole with a slow colour blend transition effect

**NeonFlash** - This option turns the pole into a neon pole that flashes through colours.

**NeonSolid** - This option turns the pole into a neon pole with a fixed colour.



**Base Style** - This option displays a menu with a variety of choices for the base appearance. This option only appears when the base is linked to the pole.

**Spot Light** - The poles cap has a spotlight built in that can be toggled with this option.

**If the cap is not attached to the pole, this menu option will not be available.**

## POLE ADVANCED SETTINGS AND SECURITY

Inside the pole you will find two note cards labelled `access_list` and `pole_settings`

Most of the options in `pole_settings` should be left alone. I will explain what each one does here though for the sake of completeness.

**settext** - This sets the text that appears when an avatar right clicks on the pole to dance.

**offset** - This is the animation offset (PLEASE DO NOT CHANGE THIS! It has been setup already for optimal positioning.)

**command\_channel** - PLEASE DO NOT CHANGE THIS UNLESS YOU HAVE PROBLEMS. It sets the channel the pole communicates to itself on.

**access** - You may wish to change this if you want to restrict who can use the pole. This can be set to one of the following options

*ACCESSLIST - This will only allow dancers listed in the notecard `access_list` to use the pole*

*GROUP - This will only allow dancers with the same active group on that the pole is set to.*

*OWNER - This will only allow the owner to use the dance pole.*

*ANYONE - This will allow anyone to use the pole without any restrictions*

**debug** - This is only there for me to debug the pole and find out what could be causing problems. It will cause lots of chat spam if enabled. If I am helping you with an issue I may ask you to set this option to TRUE, otherwise please keep this set to FALSE.

**tipjarchannel** - This is the channel that the pole talks to the remote tip jar board on. Both the board and the pole should have the same value. If you have multiple poles rezzed make sure all of them have a different tipjarchannel number and setup the tip boards to match.

## THE TIP BOARD



Included with this pole is a Tip Jar Board. When an avatar sits on a nearby sensual dancepole the board will display their profile picture along with a message at the top. The message can be configured inside the settings notecard inside the board along with the percentage of tips the dancer will receive.

The settings notecard inside the tip board has the following options...

**dancers\_percentage=80** *This is the percentage of a tip the dancer will receive*

**display\_message=%dancer% Dancing - Please TIP Generously! Total So Far %total% L**

*This is the scrolling message displayed on the tip board when an Avatar sits on it. The Wildcard %dancer% is replaced with the name of the dancer. The Wildcard %total% is replaced with the total tips received since the board was last reset.*

**tipjarchannel=-82362**

*This is the channel that the pole and tip board communicate on. Make sure that this value is set to the same value as that in the connected dance poles settings notecard. If you have multiple poles setup you can use these values to connect each pole to its own tip board.*

**A Little Info For Scripters that want to create their own Tip Jars connected to the poles!**

When an avatar sits on or stands up from the pole a chat message is shouted on the channel defined in tipjarchannel

The messages follow this format ...

**Avatar Sits Down**

```
lShout(tipjarchannel,"newavatar:"+sittingavatarsUUID);
```

**Avatar Strands Up**

```
lShout(tipjarchannel,"remove_avatar");
```



Copyright 2013 Abranimations (R)

[www.abranimations.com](http://www.abranimations.com)